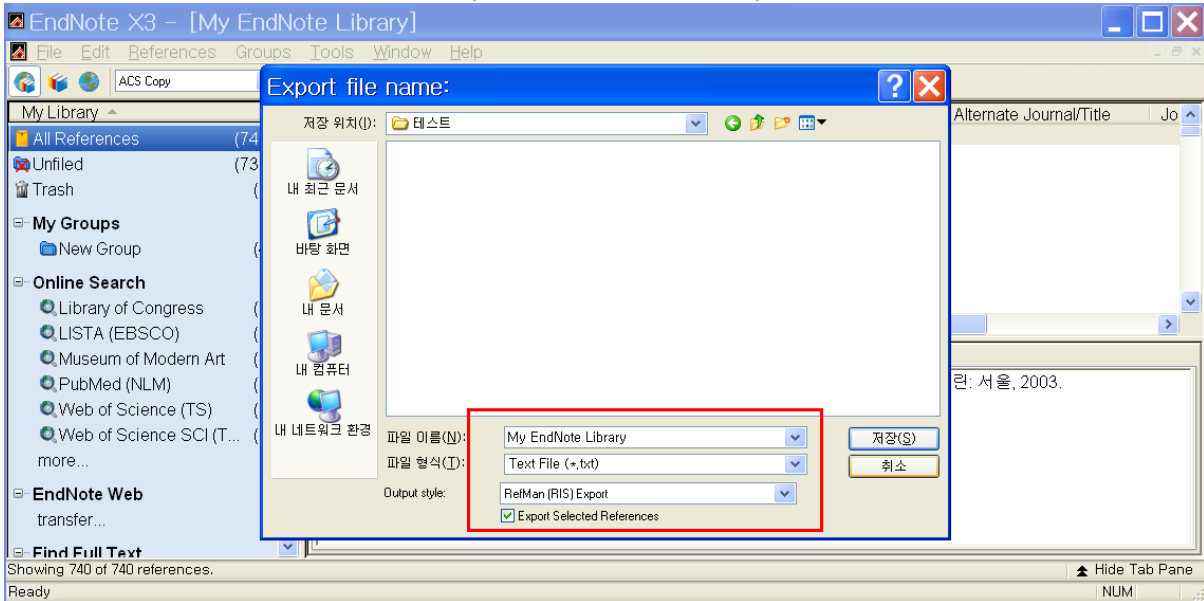
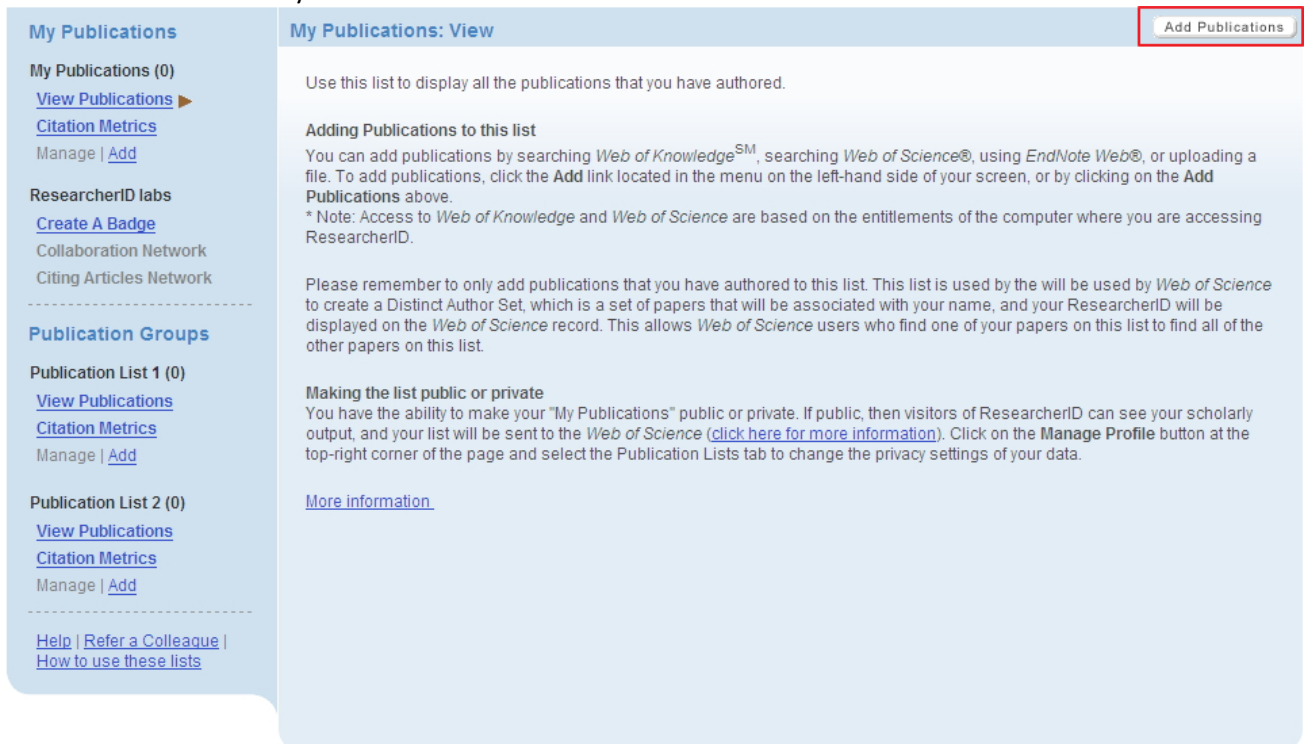


EndNote에서 Researcher ID로 Reference 가져오기

1. 필요한 레퍼런스를 File >> Export >> RefMan (RIS) export 로 저장



2. Researcher ID My Publication에서 Add Publication 선택



3. 저장한 파일을 불러온뒤 Upload File 클릭

The screenshot shows the ResearcherID interface. At the top, there's a navigation bar with links: Home, My Researcher Profile, Refer a Colleague, Logout, Search. Below that, a section titled 'Add to: Publication List 1' includes buttons for 'Return to My Researcher Profile' and 'Return to Add Menu'. There are also links for searching ISI Web of Knowledge and Web of Science, and uploading RIS files. The 'Upload an .RIS file' section explains the RIS format and provides a 'Browse for your RIS file:' button. This button is highlighted with a red box and labeled '찾아보기...'. A file selection dialog box titled '파일 선택' is open over the website. The dialog shows the current directory as '테스트' and lists 'My EndNote Library' as the selected file, also highlighted with a red box. At the bottom right of the dialog, the '열기(O)' button is highlighted with a red box. The dialog also shows the file name 'My EndNote Library' and the file type '모든 파일(*.*)'.