

텍스트 파일을 엑셀에서 열기

1. 원하는 검색식으로 검색

Author=(kim j or kim jh) AND Address=(univ colorado or bioinfo)*

Refined by: Document Type=(ARTICLE OR PROCEEDINGS PAPER OR REVIEW)

Databases=SCI-EXPANDED Timespan=All Years

Lemmatization=On

WEB OF KNOWLEDGESM | DISCOVERY STARTS HERE

Sign In | Marked List (0) | My EndNote Web | My ResearcherID | My Citation Alerts | My Journal List | My Saved Searches | Log Out | Help

All Databases | Select a Database | Web of Science | Additional Resources

Search | Author Finder | Cited Reference Search | Structure Search | Advanced Search | Search History

Web of Science[®] now with books

<< Back to previous page

Results Author=(kim j or kim jh) AND Address=(univ colorado or bioinfo*)
 Refined by: Document Types=(ARTICLE OR PROCEEDINGS PAPER OR REVIEW)
 Timespan=All Years. Databases=SCI-EXPANDED.
 Lemmatization=On
 Create Alert / RSS

Results: 546 Page 1 of 55 Go Sort by: Publication Date -- newest to oldest

Save to: ENDNOTE[®] WEB | ENDNOTE[®] | RefWorks | Analyze Results | Create Citation Report

ResearcherID more options

1. Title: **Azimuthal Anisotropy of Charged Particles at High Transverse Momenta in Pb-Pb Collisions at root S-NN=2.76 TeV**
 Author(s): Chatrchyan, S.; Khachatryan, V.; Sirunyan, A. M.; et al.
 Group Author(s): CMS Collaboration
 Source: PHYSICAL REVIEW LETTERS Volume: 109 Issue: 2 Article Number: 022301 DOI: 10.1103/PhysRevLett.109.022301 Published: JUL 10 2012
 Times Cited: 0 (from Web of Science)

SFX Full Text View abstract

Refine Results
 Search within results for
 Web of Science Categories Refine
 BIOCHEMISTRY MOLECULAR BIOLOGY (88)
 PHYSICS PARTICLES FIELDS (58)
 PHYSICS MULTIDISCIPLINARY (57)
 BIOTECHNOLOGY APPLIED MICROBIOLOGY (47)
 GENETICS HEREDITY (36)
 more options / values...

2. Output Records에서 내보내기


Results: 546 Show 10 per page Page 1 of 55 Go Sort by: Publication Date -- newest to oldest

Output Records

Step 1:
 Selected Records on page
 All records on page
 Records 1 to 500

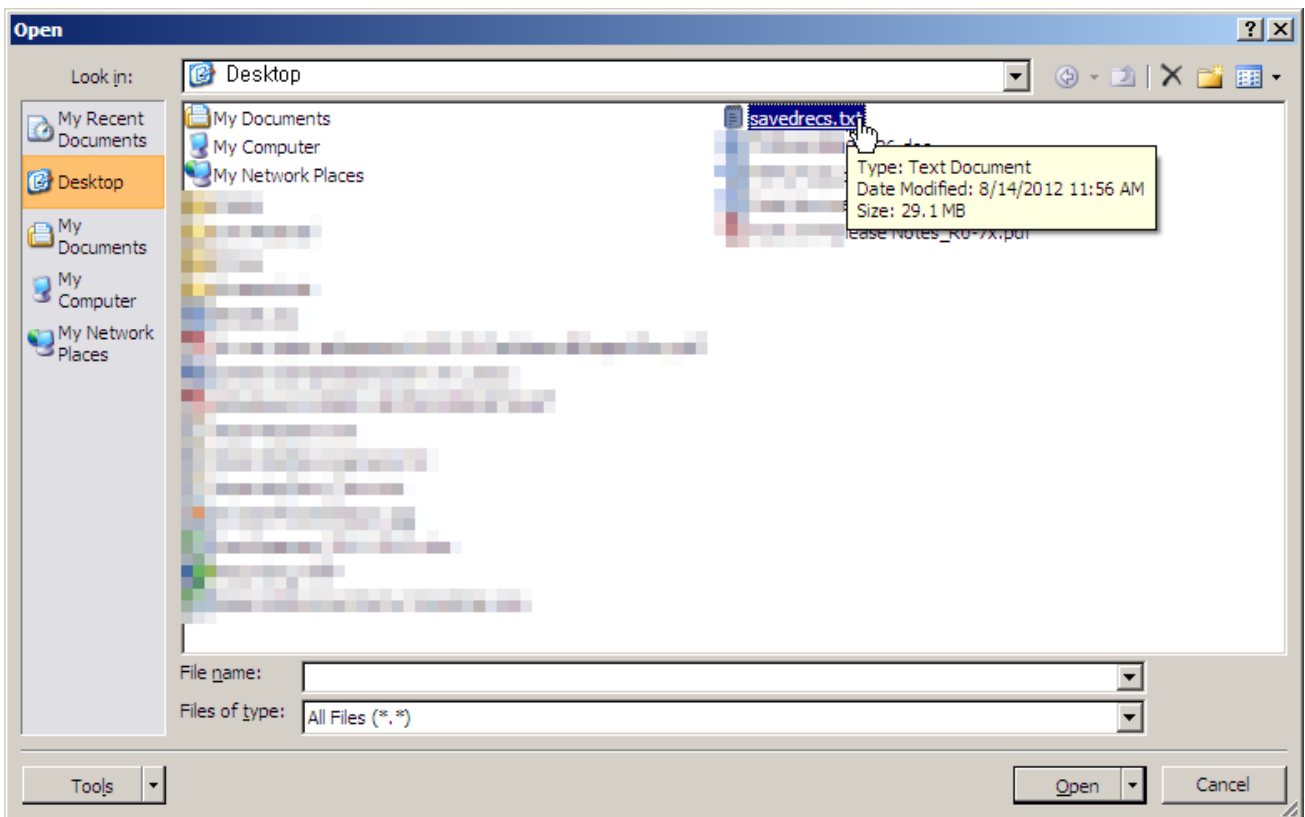
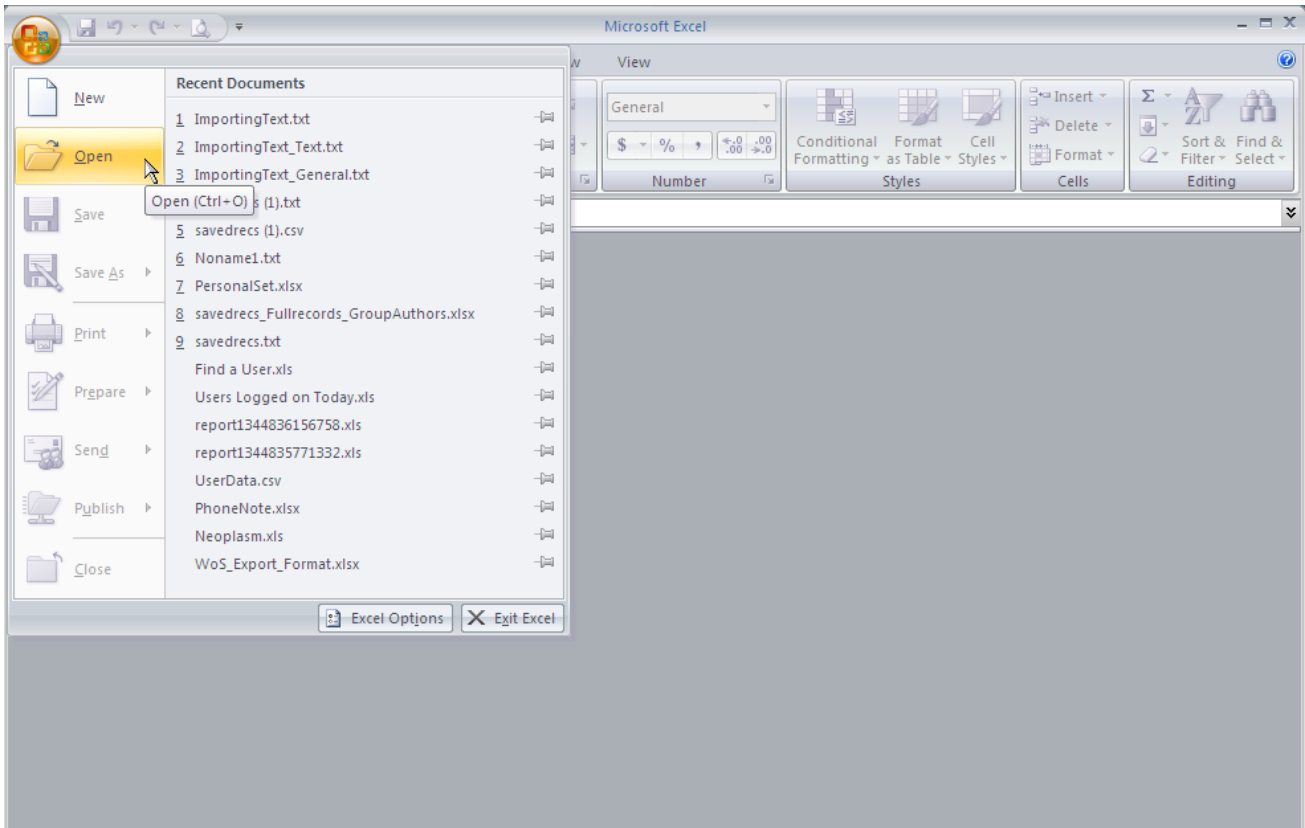
Step 2:
 Authors, Title, Source
 plus Abstract
 Full Record
 plus Cited References

Step 3: [How do I export to bibliographic management software?]
 Save to: ENDNOTE[®] WEB | ENDNOTE[®] | RefWorks | ResearcherID
 Save to Tab-delimited (Win) Save Save the selected records

546 records matched your query of the 39,588,733 in the data limits you selected.
 Key:  = Structure available.

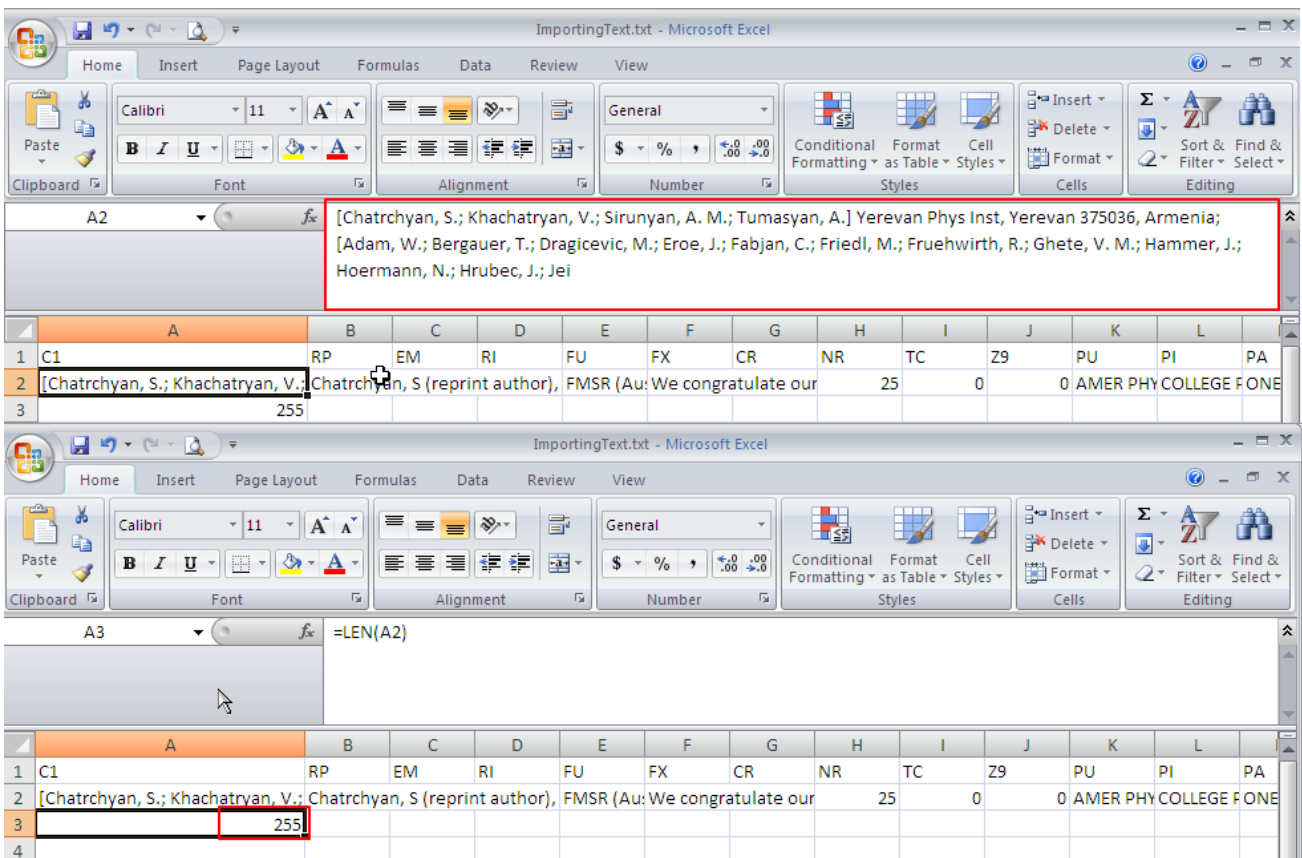
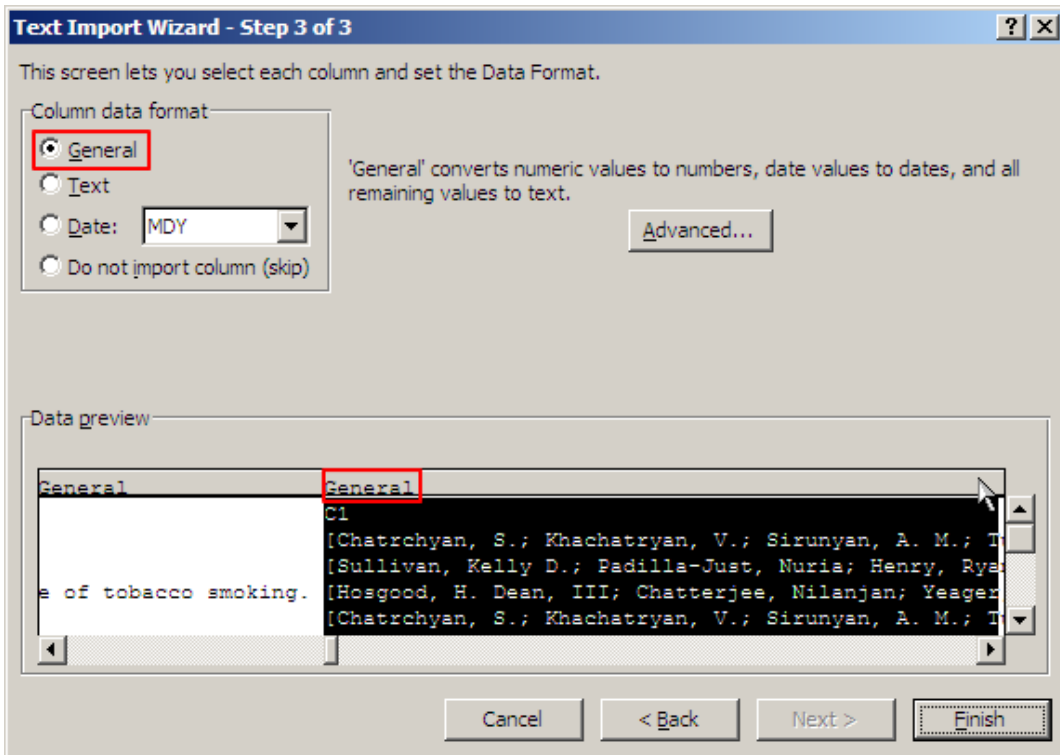
View in: 简体中文 | English | 日本語

3. 엑셀에서 가져오기

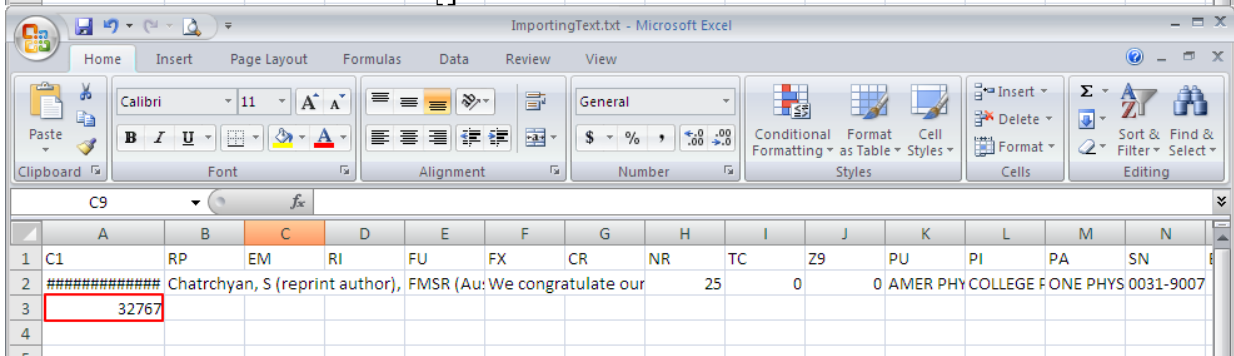
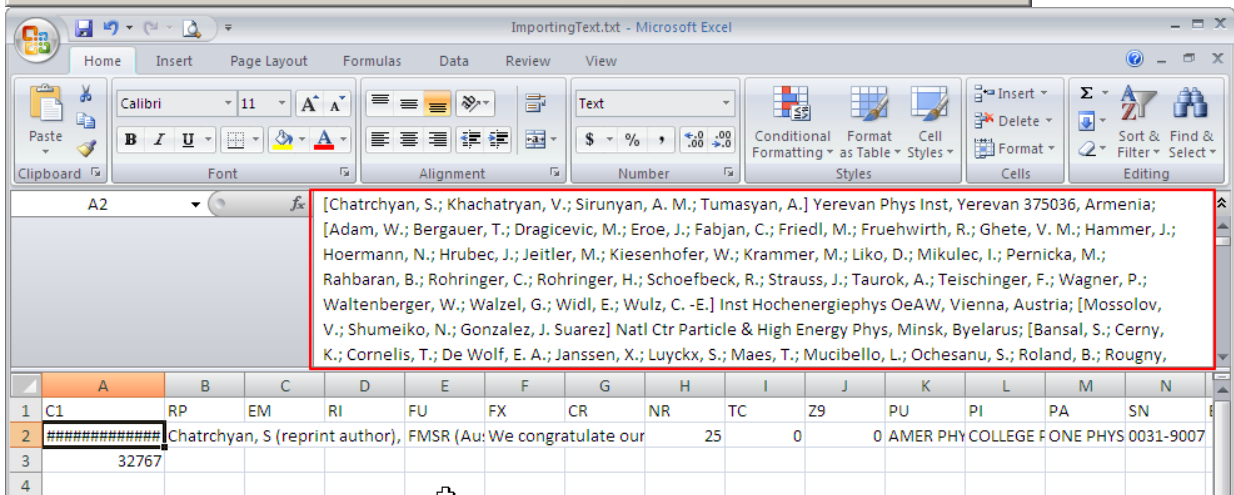
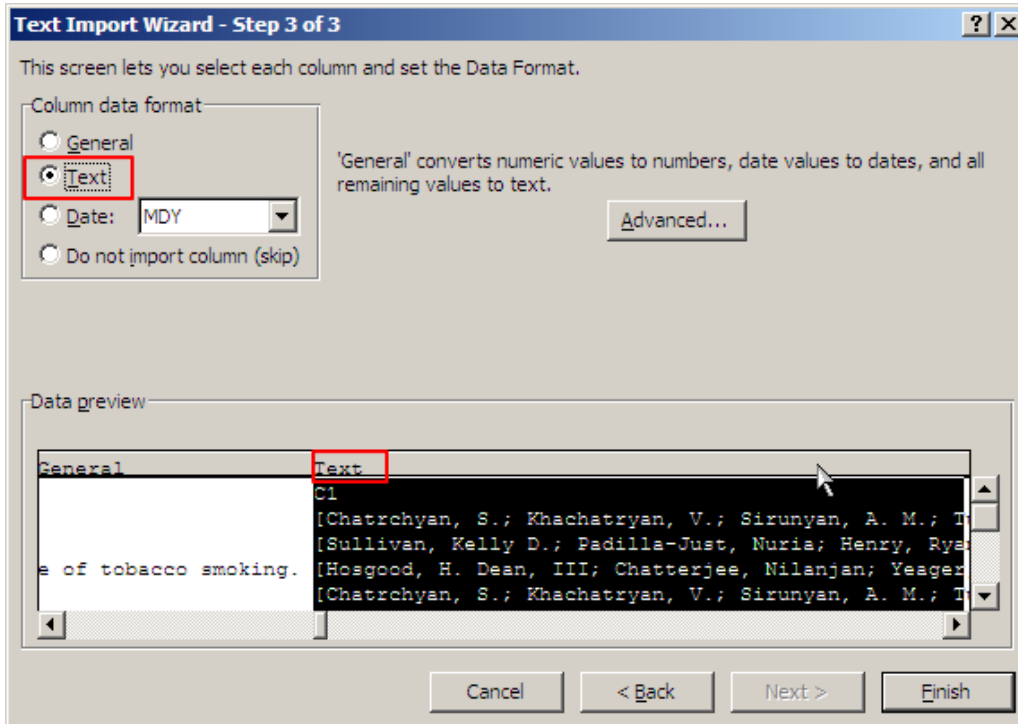


4. 텍스트 마법사에서 셀 형식 선택

4-1. 텍스트 마법사 3단계에서 해당 셀을 General로 설정 - 각 셀당 총 255자가 보여짐



4-2. 텍스트 마법사 3단계에서 해당 셀을 Text로 설정 - 각 셀당 총 32767자가 보여짐



셀 형식에 따른 글자 수의 제한은 엑셀에서 제한하고 있는 수이며 저자/저자 주소의 정보가 긴 Group Author의 경우는 전체 정보가 엑셀에서 모두 보여지지 않을 수도 있습니다.